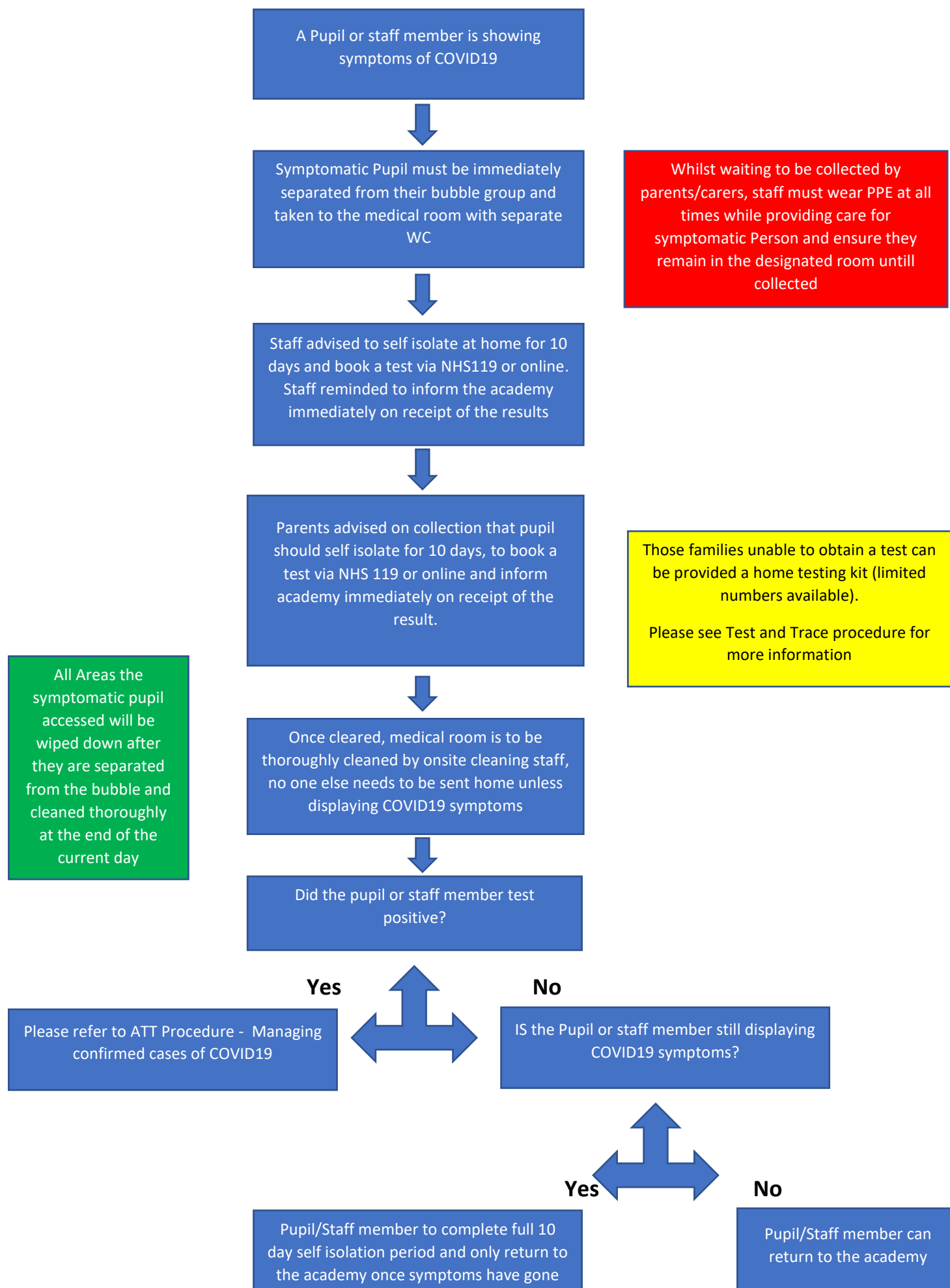


## COVID19 Procedure – Symptomatic Pupils and Staff



## **COVID19 Procedure – Symptomatic Pupils and Staff**

If a child or member of staff shows any of the symptoms associated with COVID 19 the following steps must be followed:

- If a pupil/staff member shows any symptom of COVID 19, no matter how small, they must be isolated from the main group they are in using the designated medical room at the academy.
- The relevant member of staff calls for emergency assistance immediately if pupils' symptoms worsen.
- The parents of unwell pupils are informed as soon as possible of the situation by a relevant member of staff.
- Take the pupils temperature to check for fever if not prevalent.
- Where contact with a pupil's parents cannot be made, appropriate procedures are followed in accordance with those outlined in governmental guidance.
- The Staff member caring for the pupil must wear PPE as detailed in the ATT Supply and use of PPE procedure.
- While waiting to go home, unwell pupils or those showing symptoms of COVID19 must be isolated from the rest of the academy and kept within the designated medical area and use only the designated toilet facility.
- Send pupil home and advise to self-isolate for 10 days, household members should self-isolate for 14 days, and advise that the pupil should be tested by booking online <https://www.gov.uk/get-coronavirus-test> or by calling NHS 119. The parents must inform the academy of the result as soon as they receive it.
- In certain situations where families cannot access a test the academy will have a limited number of home testing kits available
- Ensure that the area they have occupied at the academy is cleaned by onsite cleaning staff and thorough disinfectant of all areas takes place.
- If the Pupil/staff member tests negative for COVID19 and is no longer showing COVID19 symptoms they can return to the academy
- If the Pupil/staff member tests negative for COVID19 and is still showing COVID19 symptoms they should complete the self-isolation period of 10 days prior to returning.