



NEWSLETTER

Dates for Your

DIARY



Friday 16th December

Last day of term

Tuesday 3rd January

First day back at school for pupils

Thursday 9th February

Last day for pupils before half term holiday

Friday 10th February

PD day—school closed to pupils

Monday 20th February

Return to school

Monday 23rd Jan 5.45pm

Monday 30th Jan 6.30pm

Online Safety sessions for Parents/Carers

A message from the

PRINCIPAL



Dear Parents/Carers,

The end of the term has been busy but great fun. We were treated to some fabulous singing, dancing and acting from Reception, Year 1 and Year 2 in their performances. We enjoyed our Christmas Dinner last week and the children are excited about the return of our end of term party.

Yesterday our choir visited Mildenhall Lodge Care Home to sing some Christmas songs to the residents, who surprised the children with a Christmas gift each.

On Friday we have our end of term certificates for behaviour and attendance as well as our first attendance raffle. Well done to everyone who got a raffle ticket into the draw. Please read Page 3

to look at some changes we are making to our attendance authorisation.

In the new year we will be having a focus on our school rule 'Be Ready'. Part of this will be making sure all children look smart and ready for learning. Please support us by ensuring your child wears the correct uniform every day.

This week we say goodbye to Miss Parish who has taught in our Early Years for over 11 years. I am sure you will join me in wishing her well in her new job. We have welcomed Mrs Parsons, Mr Cobbold and Mrs Balrey to our teaching assistant team.

Have a lovely Christmas break.

Naomi Brown



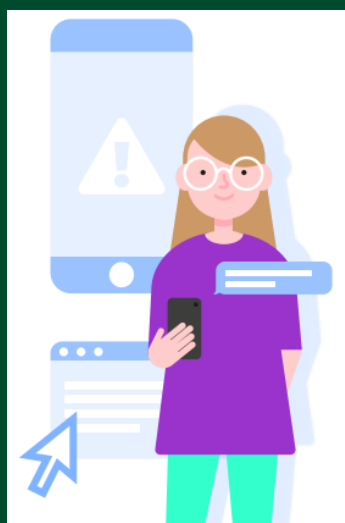
Safeguarding

On-line Safety

Academy Transformation Trust are offering two live online parent and carer presentations with our digital safety specialist provider, Smoothwall. These events will present the key online risks that young people face, and will offer you useful insight into the online world your children see and the risks they may be exposed to. There will be tips on how to keep your children safe online, expert Q&A sessions, and signposting to useful guides and tips. If you have any specific questions that you would like answered, please speak to us before Monday 16 January so we can ensure your topic is covered in the presentation or live question and answer session. We ask that all parents attending this live session ensure that they watch the presentation away from their children, as some of the content covered may not be suitable for children and young people to hear. We would also not want to inadvertently advertise inappropriate online risks to young people. The presentations will be delivered on the two dates listed below and links to the events will be sent out via ClassDojo nearer the time.

Monday 23rd Jan 5.45pm

Monday 30th Jan 6.30pm



Emotional Literacy Support

We are very fortunate to have 2 members of staff who are trained to provide Emotional Literacy Support (ELS) to individual pupils. The purpose of ELS is to look at the life challenges that some children face and how these can detract from their ability to engage in learning. These include social skills, emotions, bereavement, anger management and self-esteem. The sessions are led by one of our two qualified Emotional Literacy Support Assistants (ELSAs), Mr Gibbs or Mrs Cobbold. A session takes place on a designated day and lasts for 45 minutes. These sessions will be held over a period of 6-8 weeks.

If you feel that your child may benefit from ELS please speak to your child's teacher or a member of the safeguarding team who all wear yellow lanyards. We do currently have more demand for ELS than we are able to provide. Each half term we meet as a team to discuss who will receive this support. Sometimes it is more appropriate to make a referral to an external agency such as the School Nurse or the Mental Health Team.



Attendance

Attendance at school is vital to enable children to reach their full potential. We recently undertook an attendance review and noticed some things we would like to improve on.

From January, we will not be authorising minor ailments such as a cold, cough, headache or stomach ache. If you feel your child is able to try coming to school, then please let your teacher know they have not been feeling well and we will phone if they deteriorate.

Where absence levels are high you will be required to provide medical evidence for the absence to be authorised. Where 10 unauthorised absences occur (5 days) you may face a fine of £60 per parent. Obviously, no-one wants this to happen so before this stage is reached you will be invited in for a meeting with a member of our pastoral team to form a plan to support and improve attendance. Please also note that our policy states that medical evidence is required for 5 or more consecutive days off school.

If your child has an unavoidable appointment which means they will miss morning or afternoon registration we will require evidence such as a letter, text message or an appointment card in order for the absence to be authorised.

Our pupil progress meetings this week have shown that in some cases poor attendance is affecting the attainment of pupils.

We will continue to have our rewards for attendance including continuing with our termly raffle, see photo for prizes.



Quick reminders

Clubs

After the Christmas holiday our sports' club will be a variety of team games.

Y1/2 starts Tuesday 10th January and ends Tuesday 7th February

Y3/4 starts Wednesday 11th January and ends Wednesday 8th February

Y5/6 starts Thursday 12th January and ends Thursday 9th February

Football club for Years 4/5/6 starts on Friday 6th January and ends Friday 3rd February

We have before and after school booster sessions running for Year 1, 4 and 6 currently.

Our choir continues to be very popular and very successful. Our children sang beautifully at the Mildenhall Lodge Care Home this week.

Uniform

Children must be in the correct uniform everyday.

- White shirt (polo shirt for N and R only)
- School tie (Y1-Y6)
- Grey trousers or skirt
- School jumper or cardigan
- Plain black shoes
- PE kit—plain black tracksuit trousers/shorts, green PE T-shirt with logo, school jumper, trainers

End of Term

Here are some images from our fantastic end of term. Nursery had a very well attended stay and play session on Monday for parents and carers.



Reception impressed us all with their performance of Baamy Bethlehem. They did a fantastic job of learning their lines, songs, dances and stage directions.



Year 1 and 2 learnt a variety of Christmas songs to share with us. They certainly helped us all to feel Christ-massy.

We also enjoyed our Christmas Dinner and this week we explored the ice!



A Merry Christmas from everyone at Great Heath Academy



Great Heath Newsletter

Dec 2022 | 4



office@greatheathacademy.attrust.org.uk



01638 713430



greatheathacademy.attrust.org.uk



@GreatHeathAcad



Girton Close, Mildenhall, Suffolk, IP28 7PT