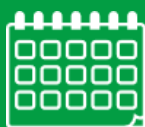




Dates for Your

**DIARY**



**Thursday 6th March 2025**

World Book Day—dress up as your favourite character and parents can come into school.

**Friday 21st March 2025**

Red Nose Day—Come to school with a 'funny' hair style/hat & something red.

**Year 3 and 4 present their show, 'Movie Magic Songs'**

**\*NEW UPDATED\* times:**

Tuesday 11th March at 2.30pm

Wednesday 12th March at 9.15am and 2.30pm.

**Friday 28th March 2025**

School closed —PD day

**Parents Evening**

Monday 31st March 2025 and  
Wednesday 2nd April 2025

**Easter Holiday—School Closed**

Monday 7th April to Monday 21st April.  
School will be closed on Monday 21st April as it is a bank holiday.

The current year 's calendar can be found [here](#).

The new **2025 / 2026 calendar** is now available on our school website or by clicking [here](#).

# NEWSLETTER

## A message from Mrs Mitchinson

A warm welcome back to everyone—I hope you all had a relaxing break. We saw some great progress last half term; phonics is coming on in leaps and bounds in Year 1, Year 4s are moving forward with their times tables, Reception are beginning to write in simple sentences and our Year 6s are showing off their Maths understanding with super progress across calculation.

We've seen sporting success coming 4th in our Year 5 and 6 Swimming Gala at The Hub. Our Year 3 and 4 Athletics team made us proud at a sporting festival in Newmarket and our Year 5s continue to impress us with their resilience in learning to play their musical instruments.

This week, Year 2 are going on a local visit, exploring careers within the community. We have a trip to Duxford coming soon, alongside a farm visit for Year 1s, a concert for parents by Year 3 and 4 and a residential to Bawdsey Manor for our Year 6s—it's going to be another busy half term!

We have one of our favourite days in the school calendar next week, World Book Day. We will be celebrating reading by asking children to wear a book related costume on the day. We hope this will promote conversations about reading and get recommendations from each other about book choices. The book choice is key when dressing up—even if it's just a prop or a clue make sure your child is recommending something to read with their costume. We have lots of costumes in school if you would like to borrow one of ours!

Parents are also welcome to come into school from 8.45—9.45, via the school office, to share books with their children, listen to stories, and help with reading activities.

To add an extra fun element, we are asking children to share photos of themselves reading in unusual places. This can be shared via dojo or our office email. The staff will be joining in too and we hope to share these on our social media platforms throughout the day. Prizes will be awarded to those who wow with their imaginative ideas!

*Mrs Emily Mitchinson*

**Head of Academy**



As you may have noticed we are ramping up our social media and website content. We love celebrating and sharing all the wonderful things children are doing in school. We would also love to see and share their achievements outside of school. If your child has taken part in a sporting event or won prizes in an interest or even just done something new for the first time, please email a photo and description to

[gre-officeadmin@attrust.org.uk](mailto:gre-officeadmin@attrust.org.uk)

FAO Mrs MacDonald and we will share it on Dojo and Facebook. We will be sending out a new permissions form in the near future to ensure we only share photos / videos if you are happy for us to do so. Please look out for this.

Please remember to follow us on Facebook too.



We are continuing our efforts to make the environment surrounding our school safer and healthier for our community. We'd like to remind drivers to switch off their engines while parked at the school. Whilst we appreciate the mornings can be chilly in the colder months, leaving engines running outside of school may be harmful to children's health. It is illegal to idle a vehicle engine when parked, and drivers can be fined for doing so. Please join us in our 'switch off' campaign to improve our health and reduce air pollution.

## World Book Day

World Book Day will be celebrated on Thursday 6th March. Parents are invited to come into school at 8.45 until 9.45 on the day. Please come into school via the main school office and sign in before walking down to your child's class. You are welcome to split your time between classes during the session.

Children are keen to share their reading books with you and would love to share their classroom with you.

Children can come into school dressed as their favourite book character.



Please speak to your child's class teacher if your child would like to wear one of our spare school costumes. We have lots of outfits and sizes available.



We will also be giving each child a £1 book voucher that can be used to get a 'free' book from all good book shops.

# Attendance

The class attendances for Spring Term 1 are shown below;

Kiwi	92.1%
Mango	92.7%
Apricot	94.1%
Peach	96.2%
Pineapple	96.3%
Blueberry	94.6%
Strawberry	94.2%
Hercules	89.6%
Lightning	94.8%
Vulcan	96.7%
Eagle	94.3%
Galaxy	97.2%
Meteor	96.5%
Osprey	96.4%
Tornado	92.8%
Hurricane	94.6%
Spitfire	95.5%

Congratulations to :

Peach and Pineapple in Key Stage 1 and

Vulcan, Galaxy, Meteor and Osprey in Key Stage 2 -

You are all 96% and above overall for the first half-term.

## School Matters!



**Attend Today, Achieve Tomorrow**

We will shortly be sending out an Attendance newsletter that highlights the answers to key questions being asked by parents.

Mrs Martin and Mr Hicks

## Movie Magic Songs

performed by Year 3 and 4



Parents of pupils in Year 3 and 4 are warmly welcomed to join us in this year's Movie Sing Song. Tickets are now on sale!

**Show 1:** Tuesday 11<sup>th</sup> March @ 2.30pm

**Show 2:** Wednesday 12<sup>th</sup> March @ 9.15am

**Show 3:** Wednesday 12<sup>th</sup> March @ 2.30pm

[www.ticketsource.co.uk/greatheath](http://www.ticketsource.co.uk/greatheath)

## Edurio Parent Survey

Thank you for sharing your views with us. We had some very positive comments and some areas that we will work on improving with you.

We will share this work in future newsletters.

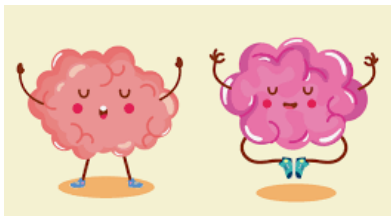
# Thank You

# SEND

## Brain Breaks—Brain Breaks are movement breaks!

Brain breaks are a powerful and effective way to address self-regulation needs, help with attention and impact learning in the classroom. Learning can be exhausting for some children; they are trying to get through the day's activities while sometimes dealing with sensory processing issues or an over-flowing brain!

Traditionally, **movement breaks are a short (3-4 minute) movement opportunity or a break from seated learning, that is incorporated into the classroom.** Children may stop work on the task at hand, or perform the movement activities as part of a transition activity. As a result of the movement break, children are able to "shift gears" and relax, breathe, and refocus. A short brain/movement break, especially those which get the whole body moving increases breathing rate and the oxygen in a child's bloodstream. This may increase concentration and capability to focus on a learning task.



A variety of Physical, Breathing and Mental Brain Breaks can be most beneficial but any can be used to help children to self-regulate or co-regulate with a trusted adult.

For more information on Brain Breaks and ideas on how to do them at home, check out The Toolbox website:

[www.theotttoolbox.com/brain-break](http://www.theotttoolbox.com/brain-break)

Miss Ramsell

# Curriculum

## Parent guides

We have created a number of guides to support parents as children progress on their journey through the academy. Over time, we will add to these, giving you more information on the curriculum and on the way children are assessed at school.

**These parent guides can be found on our website. Currently we have the following guides available for you:**

**Parent guide to Y1 Phonic Screening Check:** Phonics are the building blocks of learning to read. All children in Y1 have a short phonics check at the end of the school year. This is to understand what they have learned, and what support they may need in Y2. Our guide gives you information on how you can support your child so that they become a confident and skilled reader.

**Parent guide to Y4 Multiplication Tables Check:** Just as phonics are a main part of Y1, times tables are a key part of the learning in Y3 and Y4. The MTC is a short check that children complete at the end of Y4. Each child has 25 questions on any times tables up to 12x12, with 6 seconds to answer each question. Our guide gives you information on how you can support your child so that they remember the multiplication facts and can recall them confidently and quickly. This then helps them as they move on to more advanced maths topics.

**Parent guide to Y6 SATs:** We recently held an information session for Y6 parents to go through the assessments that our Y6 pupils complete in May. Our guide goes through each test that the children complete, with example questions and handy links to support learning. We all want our pupils to leave us with the skills and knowledge they need to be successful at secondary school.

<https://greateathacademy.attrust.org.uk/learning/home-learning/>

Mr Smith



Great Heath Newsletter

February 2025 | 4



[Gre-officeadmin@attrust.org.uk](mailto:Gre-officeadmin@attrust.org.uk)



01638 713430



[greateathacademy.attrust.org.uk](http://greateathacademy.attrust.org.uk)



@GreatHeathAcad



Girton Close, Mildenhall, Suffolk, IP28 7PT





We will be holding our first Opal Community Event on Saturday 22nd March. Everyone is welcome to come along and help create the new areas on our field. There will also be some craft activities available for children to enjoy.

A Microsoft form will be sent out soon asking if you're able to attend and which projects you'd like to get involved with. We welcome trades people who can support building projects—we need to dig a sand pit, build a stage, plant flowers, sand our boat and build our mud kitchen—what would you like to help with?



## OPAL at Great Heath



Come and join our  
Community 'Big Build' event on

Saturday 22nd March

from 10 - 2pm

Please help us to build the next phase; our sand pit, our digging area, performance stage, mud kitchen and boat (plus extra craft activities)



OPAL at Great Heath



# We need your wellies!



Please support us by donating any  
unloved wellies, as children  
deserve to have fun and play,  
whatever the weather.

***Donations can be left in the collection box outside the school entrance.***